

# ORANGEVALE COMMUNITY CENTER WALKING PATH

ORANGEVALE, CALIFORNIA

## PROJECT APPLICANT:

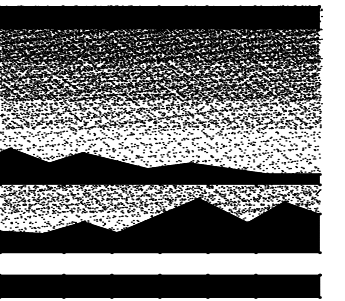
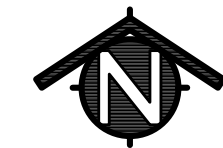
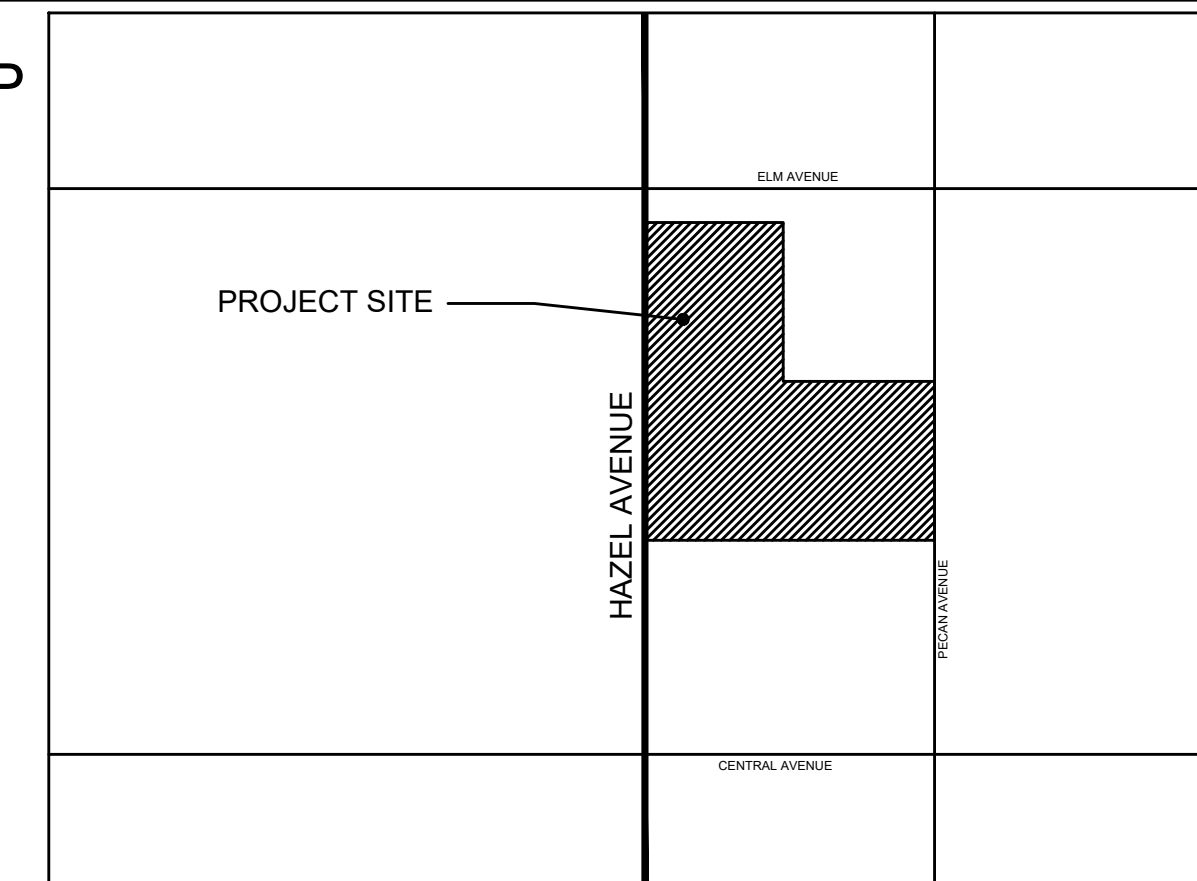
ORANGEVALE RECREATION AND PARK DISTRICT  
6826 HAZEL AVENUE, ORANGEVALE, CA 95662  
ph: (916) 988-4373

LANDSCAPE ARCHITECT  
MTW GROUP  
PETER LARIMER  
2707 K STREET, SUITE 201  
SACRAMENTO, CA 95816  
916-369-3990

### SHEET INDEX

CVR	COVERSHEET
L0.1	SITE DEMOLITION PLAN
L1.1	SITE PLAN
L2.1	CONSTRUCTION DETAILS

### VICINITY MAP



## MTW group

LANDSCAPE ARCHITECTURE  
AND PLANNING  
2707 K STREET, SUITE 201  
Sacramento, CA 95816  
916 369-3990



Peter D. Larimer C-5284

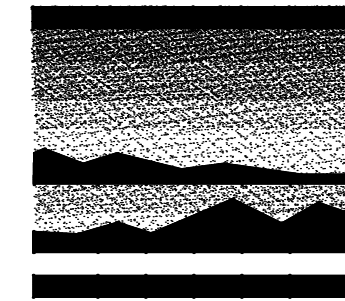
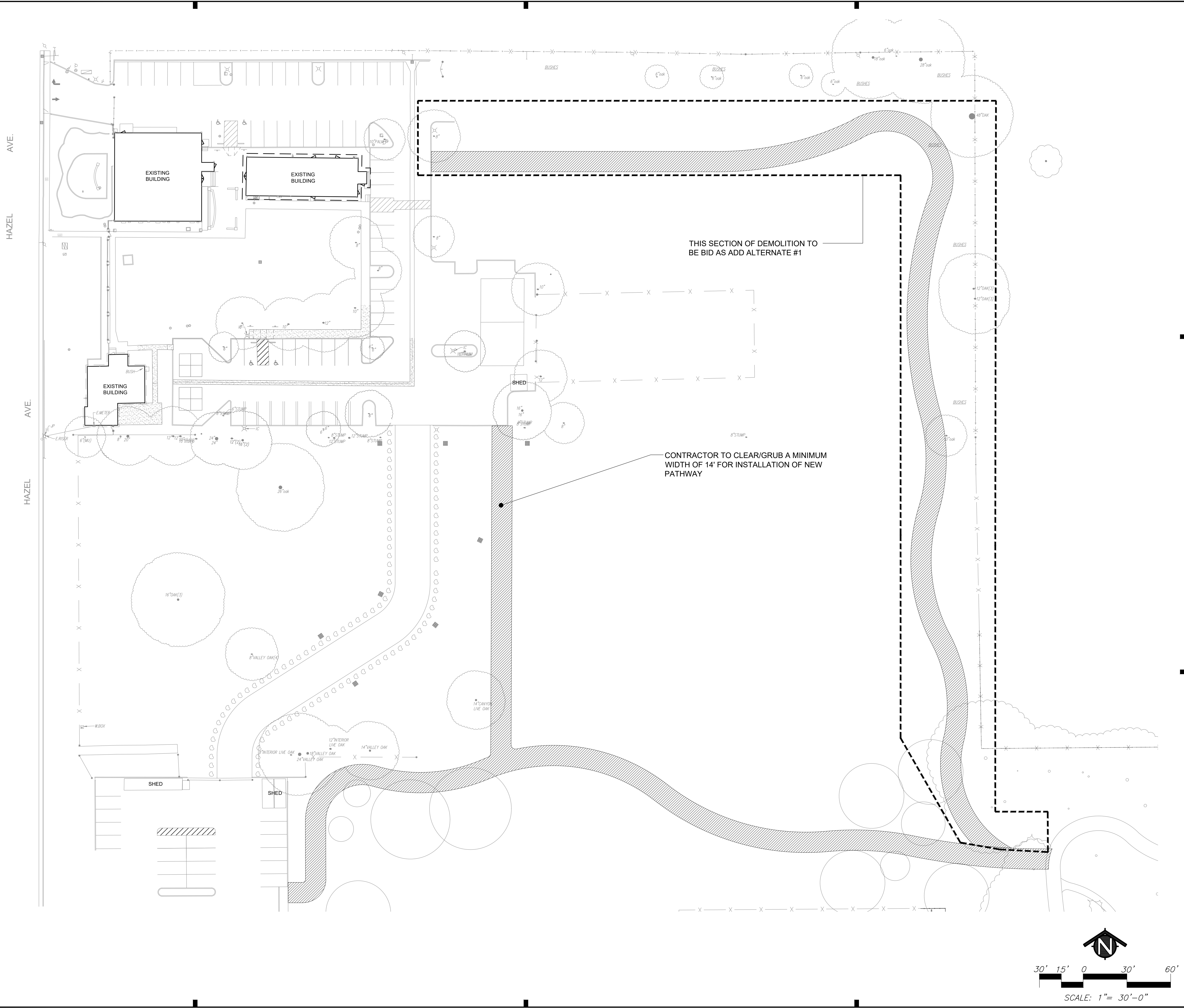
The Landscape Architects do not represent that these plans or the specifications in connection therewith are suitable, whether or not modified for any other site than the one for which they were specifically prepared. The Landscape Architects disclaim responsibility for these plans and specifications if they are used in whole or in part at any other site.

AGENCY APPROVAL		DATE
BY	DATE	DESCRIPTION

ORANGEVALE COMMUNITY  
CENTER WALKING PATH  
ORANGEVALE RECREATION AND PARK DISTRICT  
6826 HAZEL AVENUE  
ORANGEVALE, CALIFORNIA 95662

DATE 06/18/24  
JOB NO. 22-018.1  
SHEET TITLE  
COVERSHEET

SHEET NO.  
CVR  
SHEET 1 OF 4



**MTW** group  
 LANDSCAPE ARCHITECTURE AND PLANNING  
 2707 K STREET, SUITE 201  
 SACRAMENTO, CA 95816  
 916 369-3990



Peter D. Larimer C-5284

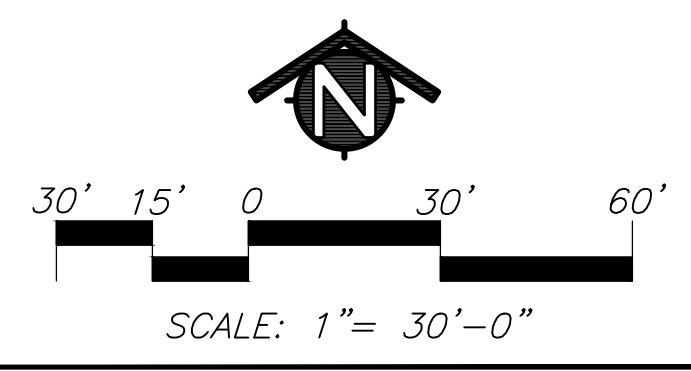
The Landscape Architects do not represent that these plans or the specifications in connection therewith are suitable, whether or not modified for any other site than the one for which they were specifically prepared. The Landscape Architects disclaim responsibility for these plans and specifications if they are used in whole or in part at any other site.

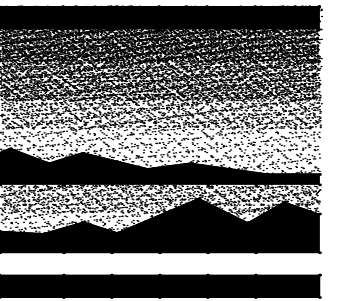
NO.	REVISIONS DESCRIPTION	DATE	AGENCY APPROVAL	
			BY	DATE

**ORANGEVALE COMMUNITY CENTER WALKING PATH**  
 ORANGEVALE RECREATION AND PARK DISTRICT  
 6826 HAZEL AVENUE  
 ORANGEVALE, CALIFORNIA 95662

DATE 06/18/24  
 JOB NO. 22-018.1  
 SHEET TITLE  
**SITE DEMOLITION PLAN**

SHEET NO.  
**L0.1**  
 SHEET 2 OF 4





**MTW** group  
 LANDSCAPE ARCHITECTURE  
 AND PLANNING  
 2707 K STREET, SUITE 201  
 SACRAMENTO, CA 95816  
 916 369-3990



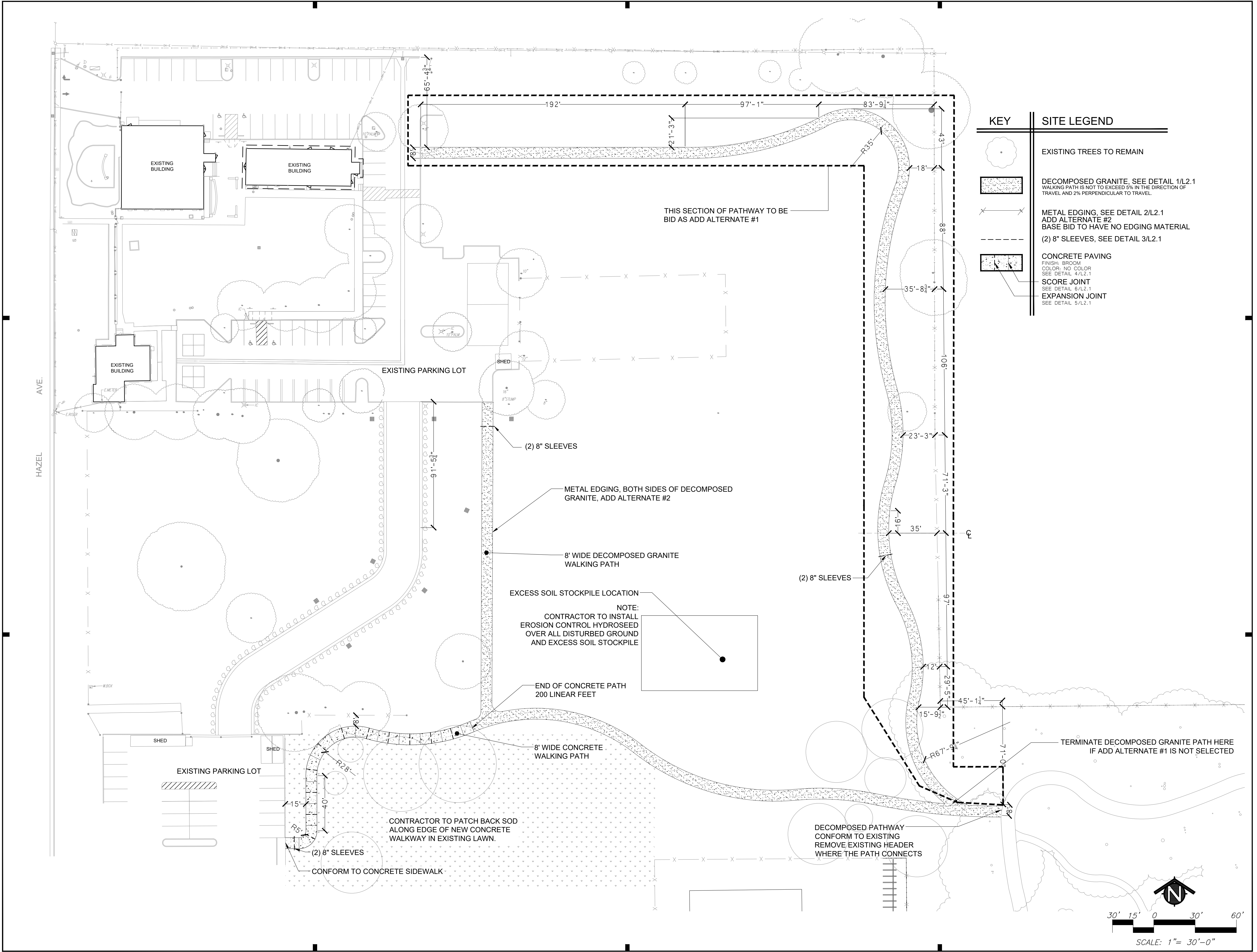
Peter D. Larimer C-5284

The Landscape Architects do not represent that these plans or the specifications in connection therewith are suitable, whether or not modified for any other site than the one for which they were specifically prepared. The Landscape Architects disclaim responsibility for these plans and specifications if they are used in whole or in part at any other site.

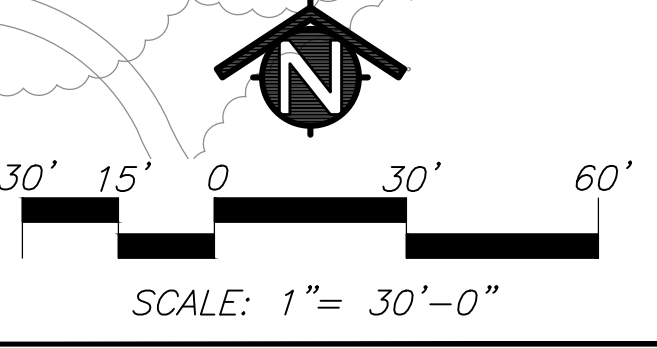
NO.	DESCRIPTION	AGENCY APPROVAL	
		BY	DATE

**ORANGEVALE COMMUNITY CENTER WALKING PATH**  
 ORANGEVALE RECREATION AND PARK DISTRICT  
 6826 HAZEL AVENUE  
 ORANGEVALE, CALIFORNIA 95662

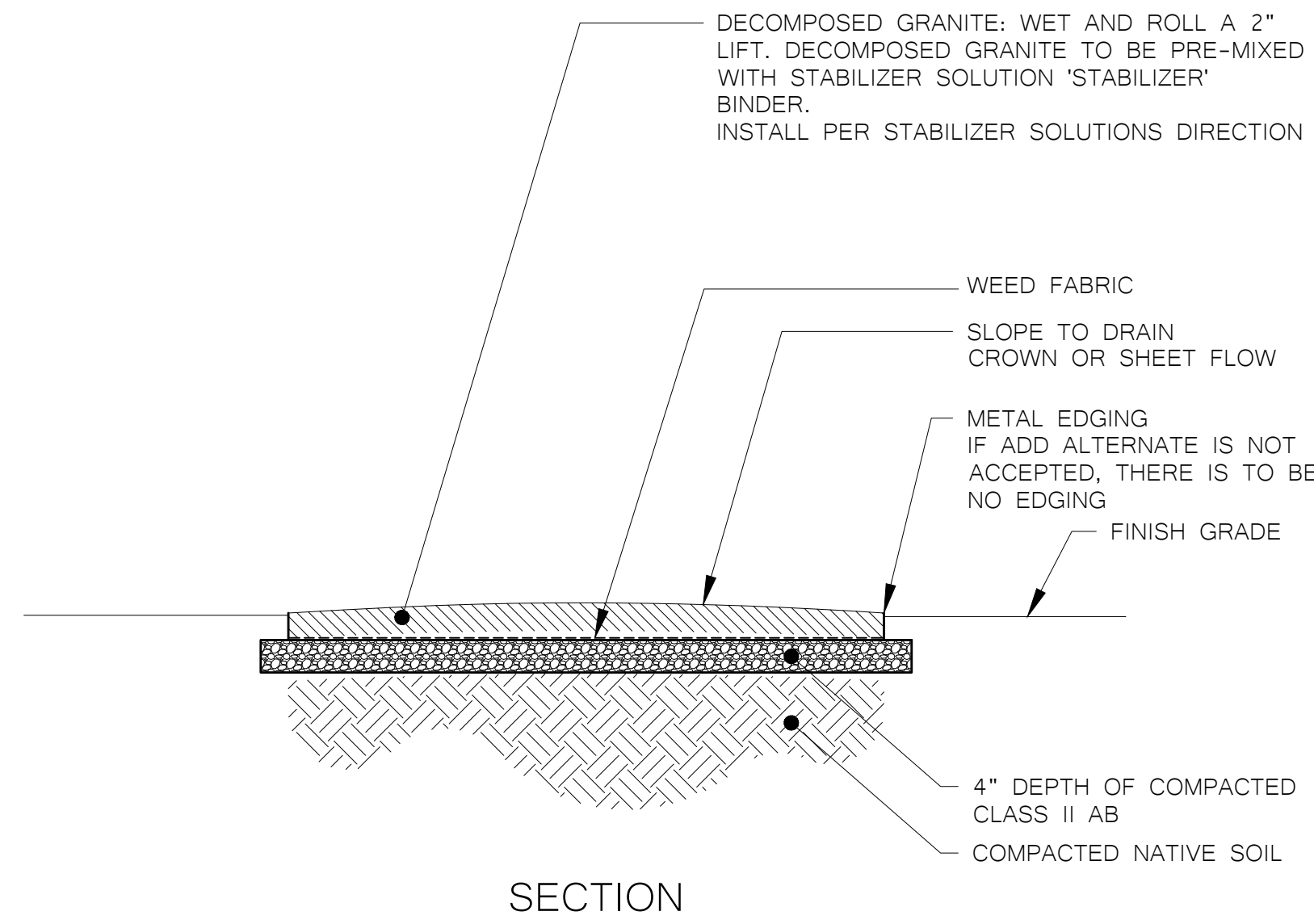
DATE	06/18/24
JOB NO.	22-018.1
SHEET TITLE	SITE PLAN



KEY	SITE LEGEND
	EXISTING TREES TO REMAIN
	DECOMPOSED GRANITE, SEE DETAIL 1/L2.1 WALKING PATH IS NOT TO EXCEED 5% IN THE DIRECTION OF TRAVEL AND 2% PERPENDICULAR TO TRAVEL.
	METAL EDGING, SEE DETAIL 2/L2.1 ADD ALTERNATE #2 BASE BID TO HAVE NO EDGING MATERIAL
	(2) 8" SLEEVES, SEE DETAIL 3/L2.1
	CONCRETE PAVING FINISH: BROOM COLOR: NO COLOR SEE DETAIL 4/L2.1
	SCORE JOINT SEE DETAIL 6/L2.1
	EXPANSION JOINT SEE DETAIL 5/L2.1

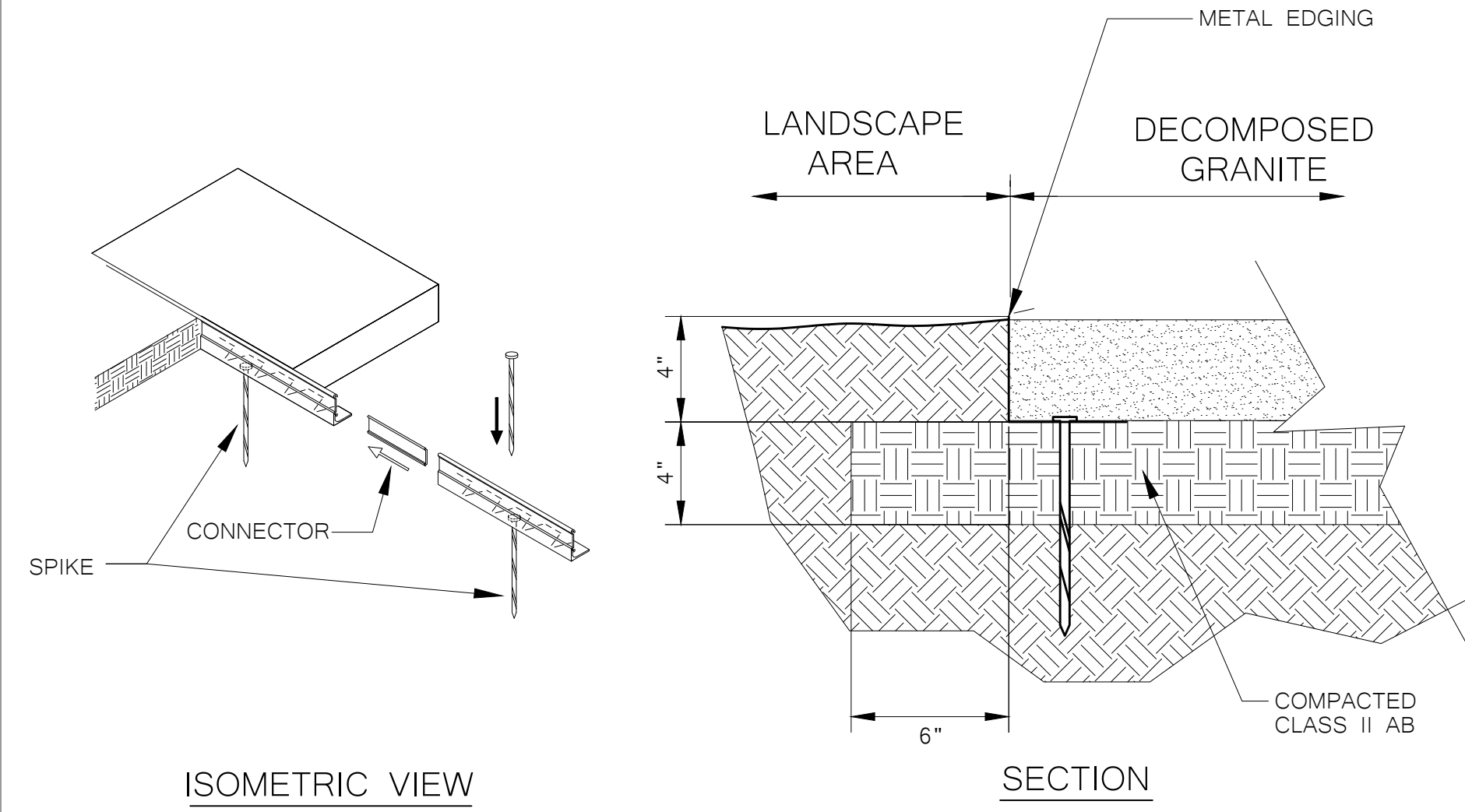


- NOTES:
- SUBMIT SAMPLE TO ARCHITECT FOR APPROVAL PRIOR TO ORDERING.
  - DECOMPOSED GRANITE SHALL HAVE A MIXTURE OF FINE TO 3/8" SIZE PARTICLES WITH NO CLODS.
  - THE MATERIAL SHALL BE FREE OF VEGETATION, OTHER SOILS, DEBRIS AND ROCKS.
  - THE MATERIAL SHALL BE REDDISH-TAN IN COLOR OR APPROVED EQUAL

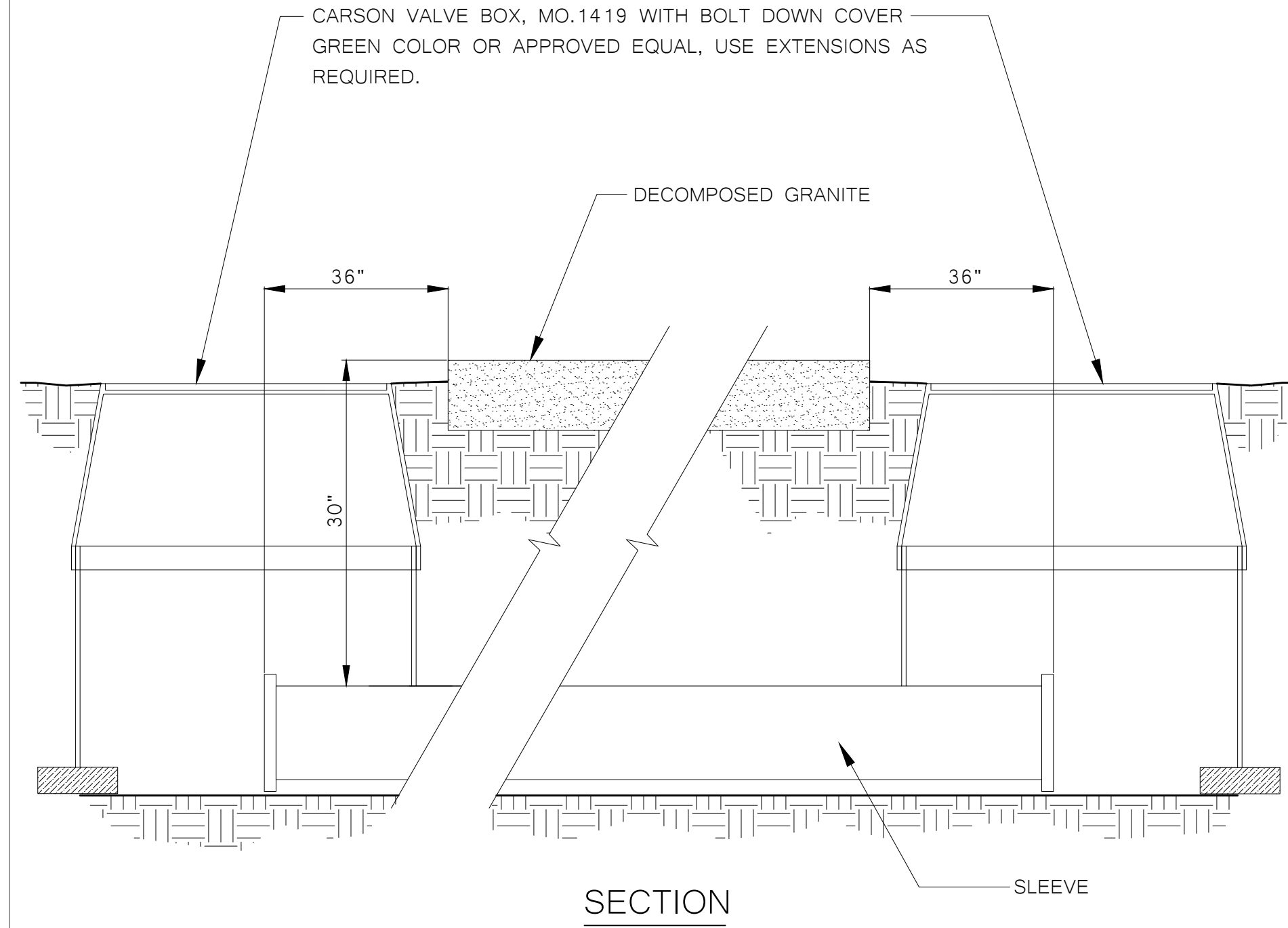


**1** DECOMPOSED GRANITE/BINDER DETAIL

- NOTES:
- INSTALL PER MANUFACTURER'S "INSTALLATION GUIDELINES"
  - 8'-0" SECTIONS CONNECTED WITH 4" SLIDING CONNECTOR.
  - CORNERS: NOTCH BASE ONLY AND FORM A CONTINUOUS CORNER
  - PERMALOC ASPHALT EDGE AS MANUFACTURED BY PERMALOC CORPORATION, HOLLAND MI. (800) 356-9660 FOR PRODUCT AND PURCHASING INFORMATION VISIT: WWW.PERMALOC.COM
  - FINISH TO BE (MF) MILL FINISH-NATURAL ALUMINUM
  - SIZE TO BE 4" X 3"

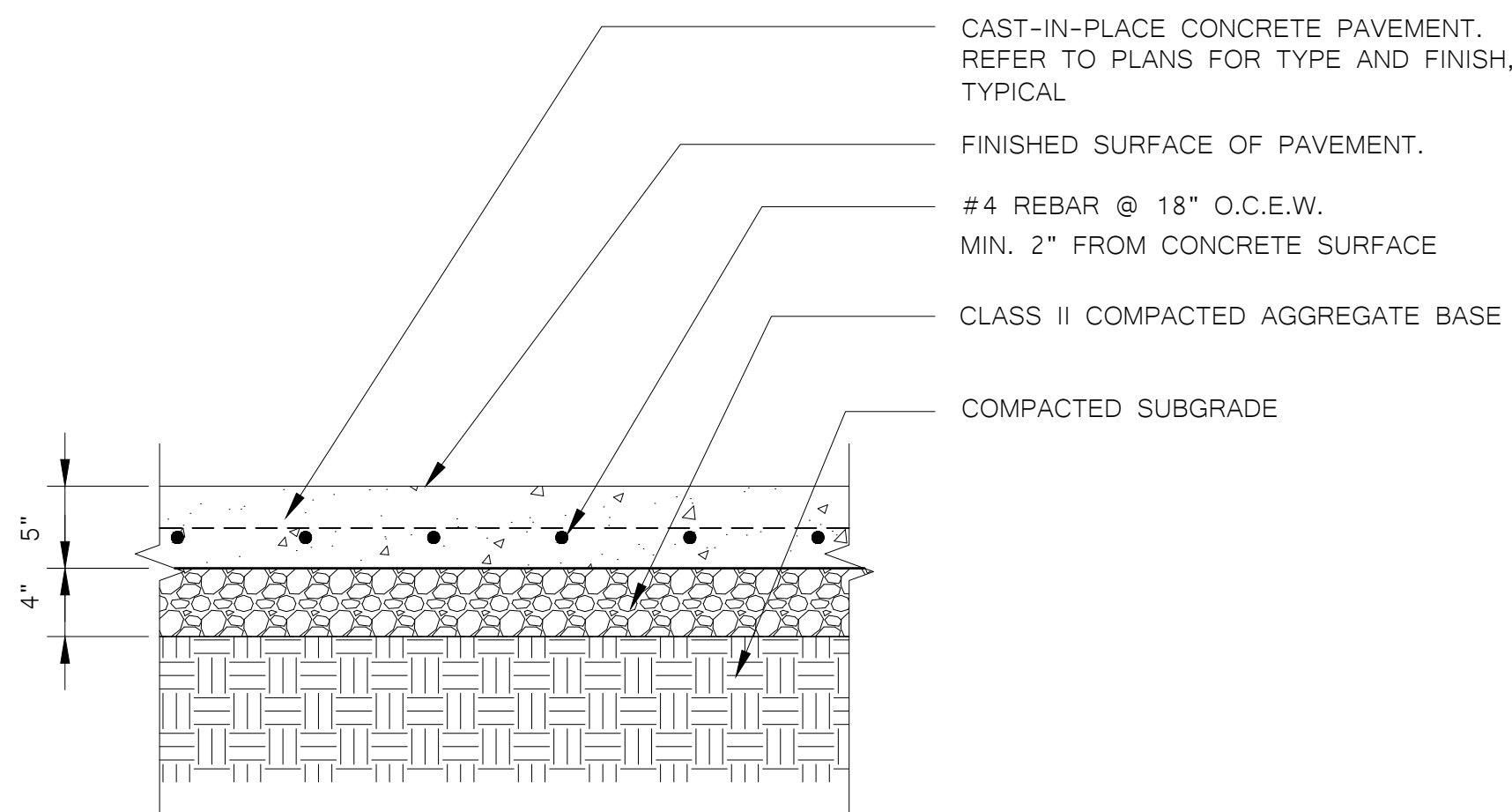


**2** METAL EDGING DETAIL



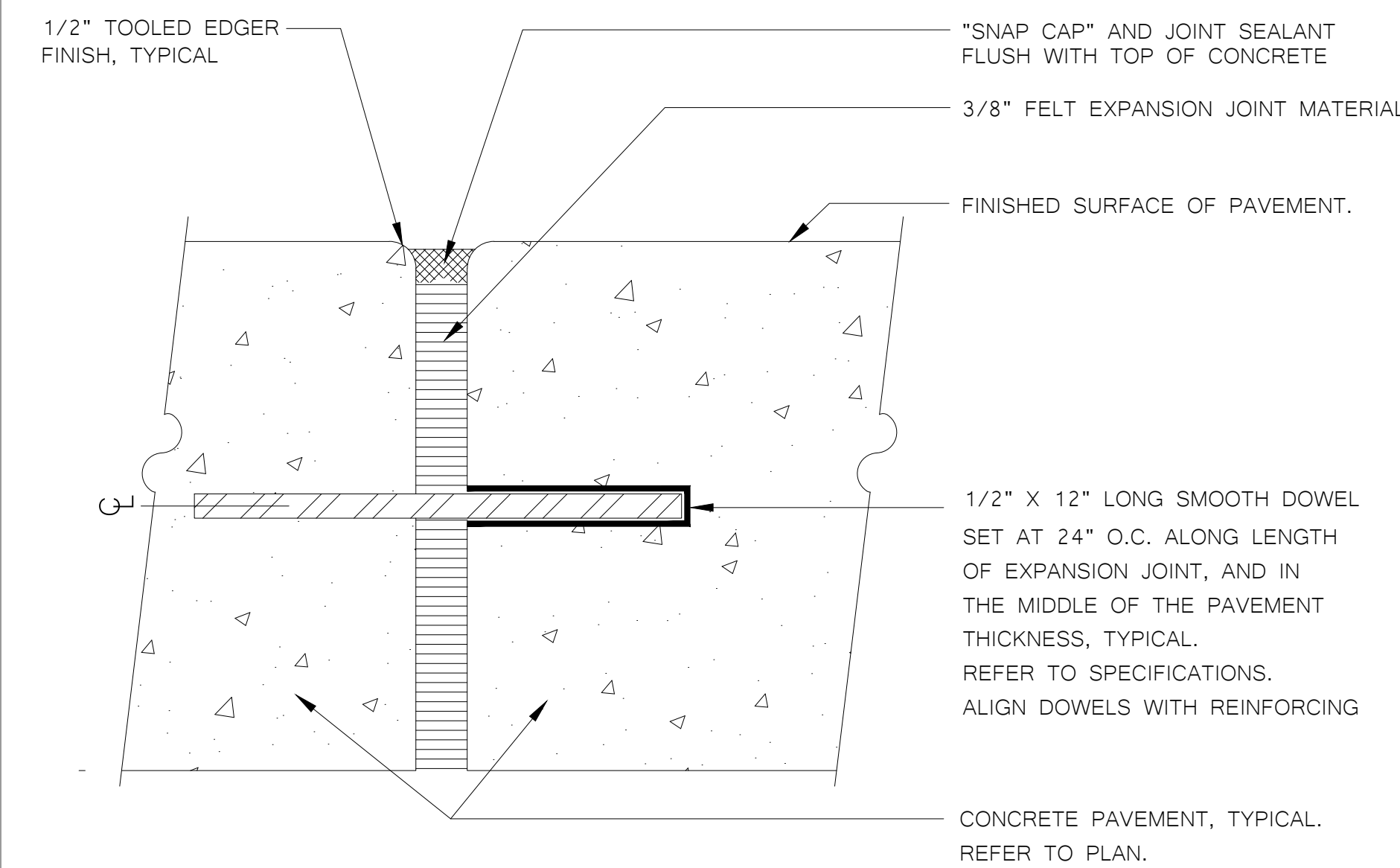
**3** SLEEVE DETAIL

- NOTE:
- INSTALL REBAR ON 2" CONCRETE DOBIES

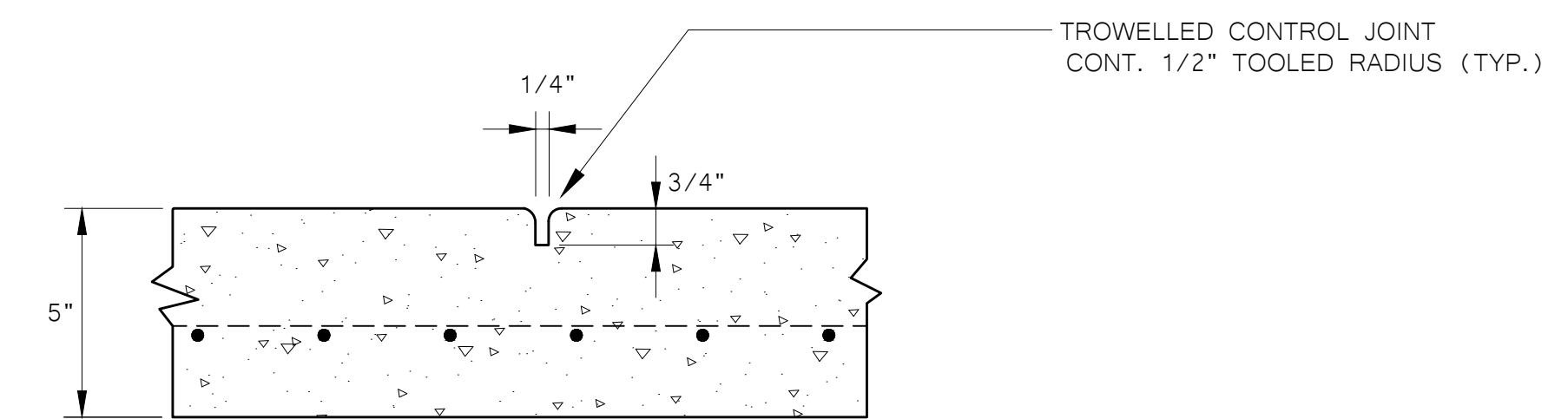


**4** CAST-IN-PLACE CONCRETE PAVING

- NOTE:
- REFER TO PLANS OR SPECIFICATIONS FOR LOCATIONS OF EXPANSION JOINTS, TYPICAL.
  - PROVIDE EXPANSION JOINTS BETWEEN CONCRETE AND BUILDINGS, TYPICAL.
  - PROVIDE EXPANSION JOINTS BETWEEN NEW CONCRETE AND EXISTING OR ADJACENT CONCRETE, TYPICAL.

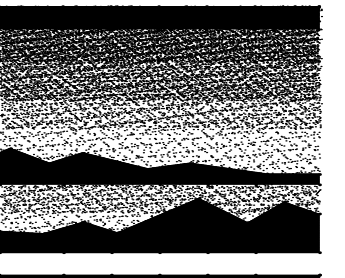


**5** EXPANSION JOINT DETAIL



**6** SCORE JOINT DETAIL

NOTE: CONSTRUCTION JOINTS PROVIDED @ INTERSECTIONS OF SEPARATE CONCRETE POURS.



**MTW group**  
 LANDSCAPE ARCHITECTURE  
 AND PLANNING  
 2707 K STREET, SUITE 201  
 Sacramento, CA 95816  
 916 369-3990



Peter D. Larimer C-5284

The Landscape Architects do not represent that these plans or the specifications in connection therewith are suitable, whether or not modified for any other site than the one for which they were specifically prepared. The Landscape Architects disclaim responsibility for these plans and specifications if they are used in whole or in part at any other site.

REVISIONS	NO.	DESCRIPTION	AGENCY APPROVAL	
			DATE	BY

**ORANGEVALE COMMUNITY CENTER WALKING PATH**  
 ORANGEVALE RECREATION AND PARK DISTRICT  
 6826 HAZEL AVENUE  
 ORANGEVALE, CALIFORNIA 95662

DATE 06/18/24  
 JOB NO. 22-018.1  
 SHEET TITLE  
**CONSTRUCTION DETAILS**

SHEET NO.  
**L2.1**  
 SHEET 4 OF 4